

# Life Cycle



Pelagic juvenile stage  
(Late larval to early juvenile)  
25 – 30 mm total length (TL)  
(1.0 – 1.2 in) 35 – 50 days

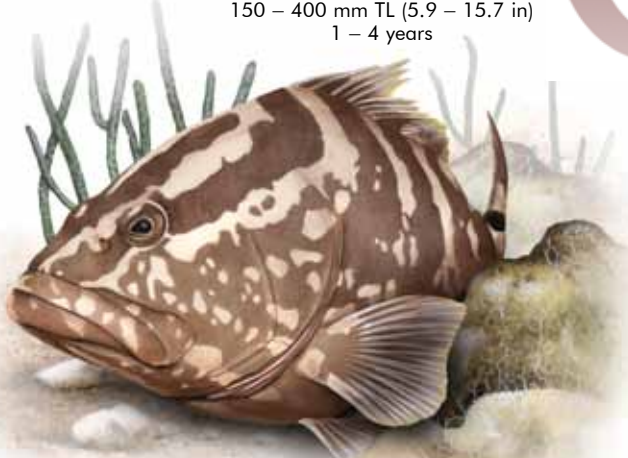
1 Fertilized pelagic eggs (up to 1 m. hatch 23 – 40 hours following fertilization.

2 Competent larvae ready to settle from the plankton are carried by night-time flood tides from the open ocean to nursery areas.

Early juvenile  
30 – 150 mm TL (1.9 – 5.9 in)  
10 – 12 months



Late juvenile  
150 – 400 mm TL (5.9 – 15.7 in)  
1 – 4 years

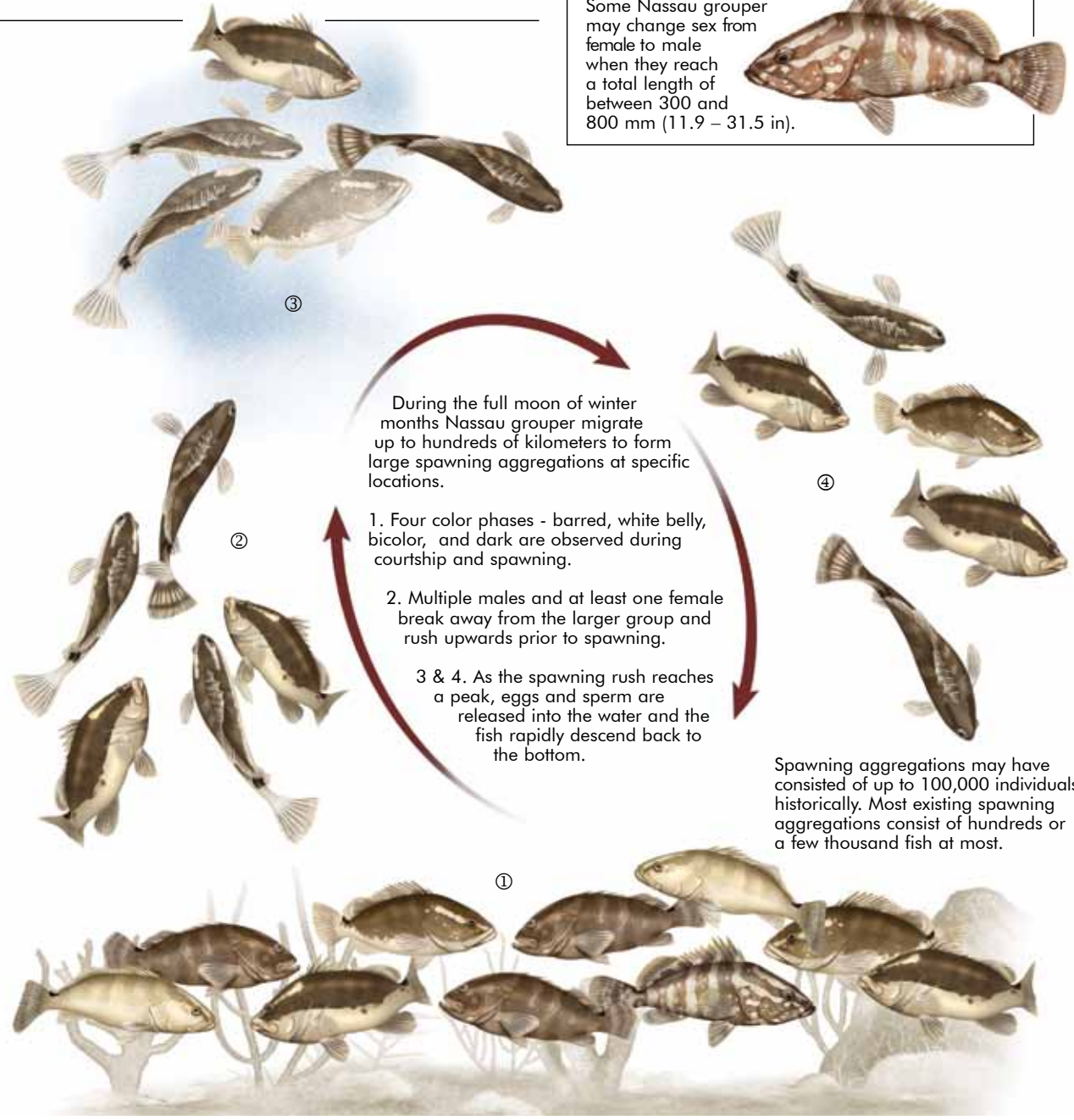


3 Early juveniles settle from the plankton into a variety of nursery areas including inshore algal beds, where they will live for up to one year.

4 At 10 – 12 months Nassau grouper move to patch reefs in shallow-water areas where they remain for several

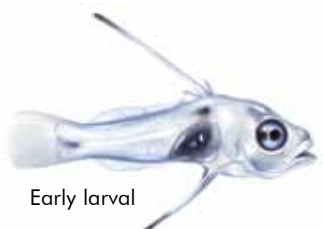
## Spawning Aggregations

Some Nassau grouper may change sex from female to male when they reach a total length of between 300 and 800 mm (11.9 – 31.5 in).



Spawning aggregations may have consisted of up to 100,000 individuals historically. Most existing spawning aggregations consist of hundreds or a few thousand fish at most.

On average, the Nassau grouper reaches a length of 300 - 600 mm (12 - 24 in) and weighs 4.5 - 9.0 kg (10-20 lbs). The maximum age reported for this fish is about 30 years.



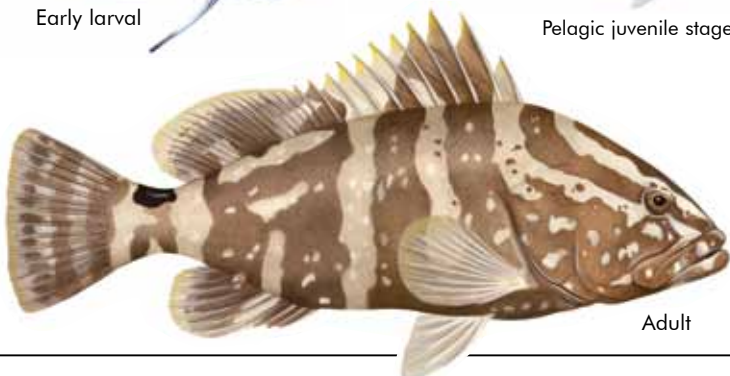
Early larval



Pelagic juvenile stage



Juvenile



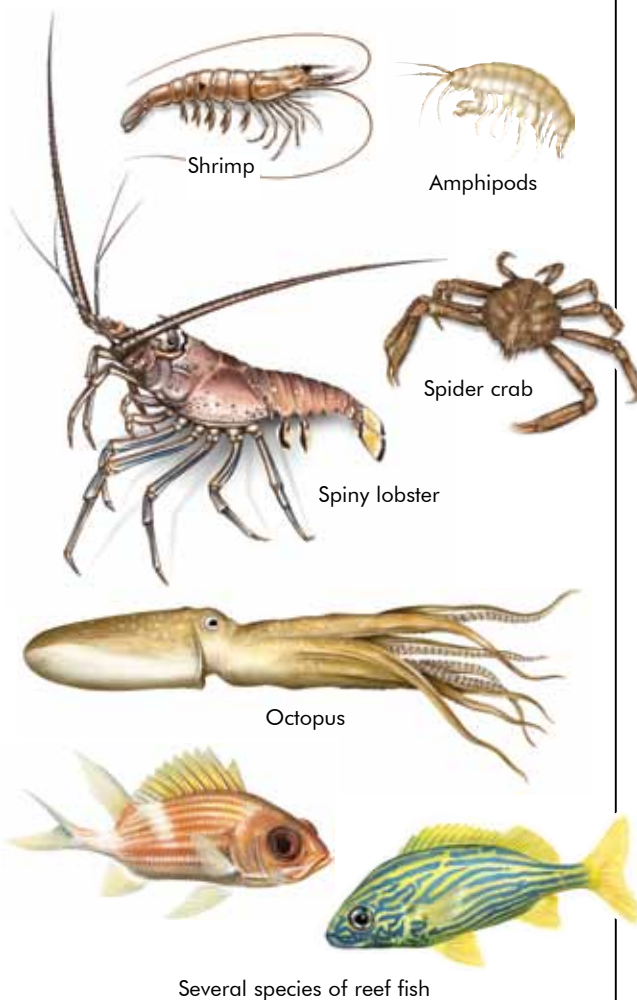
Adult

# Nassau Grouper

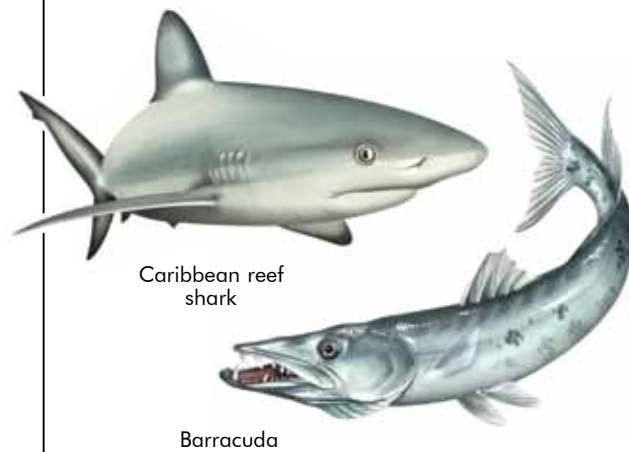
*Epinephelus striatus*

## Natural Prey

Groupers change their diet as they grow. Juveniles feed mostly on crustaceans, while



## Natural Predators



"Providing solutions for people and our oceans through research and education, since 1970."

Phone: (561) 741-0192  
Email: cmrc@cmrc.org  
www.cmrc.org

CMRC Poster Series No. 3



LEE STOCKING ISLAND, BAHAMAS  
JUPITER, FLORIDA